

Your Legal Service



PUBLICA

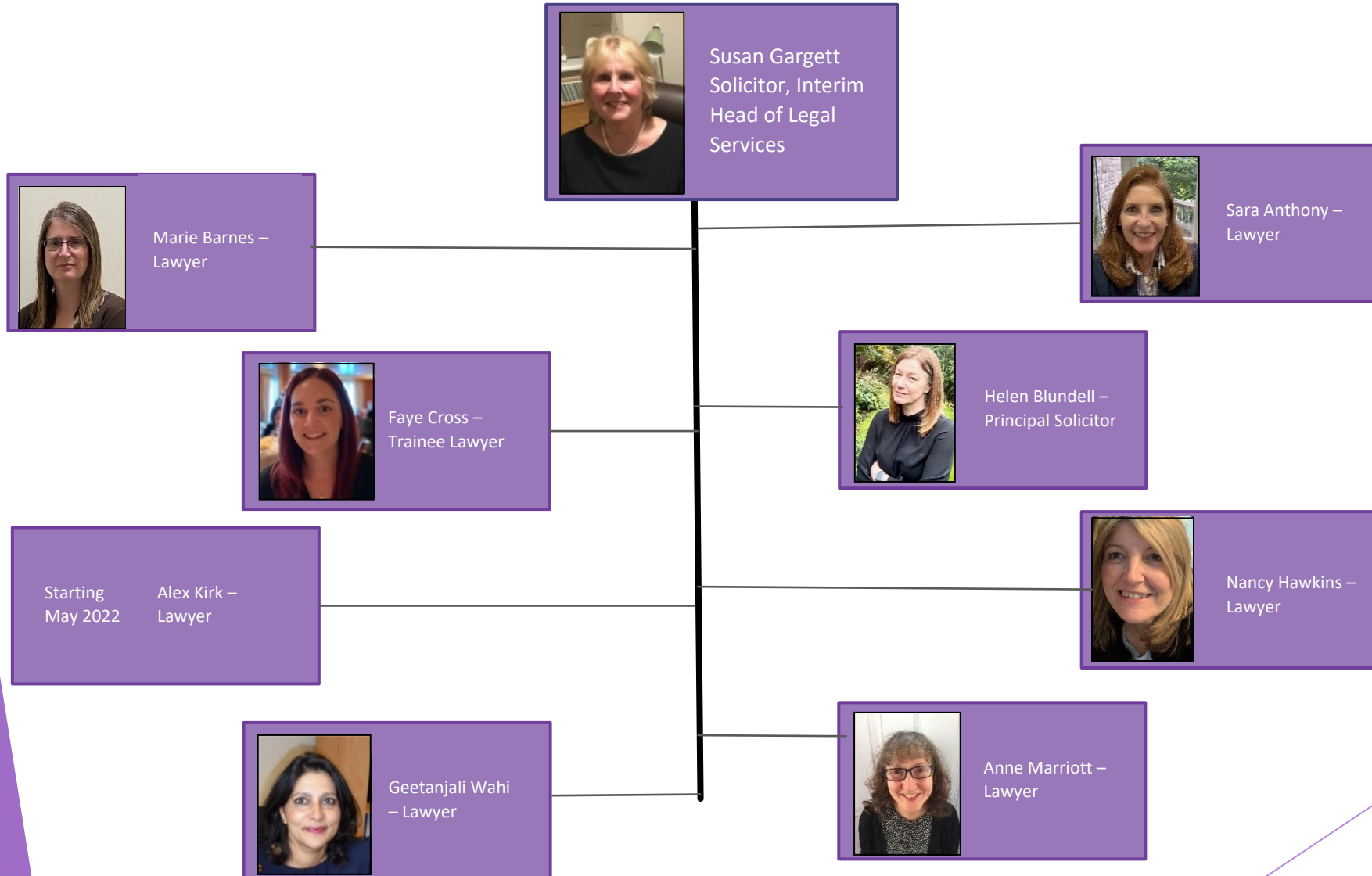
Your Priorities, our Principles

We provide you with strategic, reputational and risk-based advice and assurance

- ▶ A Service to support you and support each Council
- ▶ Deliver Council plans and policies.
- ▶ Help and assist our internal clients.
- ▶ Provide the best possible service to enhance public confidence
- ▶ Ensure the probity and legality of the Council



Your Legal Services Team



The background features abstract, overlapping geometric shapes in various shades of purple, ranging from light lavender to deep indigo. These shapes are primarily located on the right side of the frame, creating a modern, layered effect.

What Makes Your Legal Services
Special?

We Know You

We understand your priorities



Corporate Knowledge

Excellent knowledge of the Councils

Court Cases



Contract



Council Property



Project Support

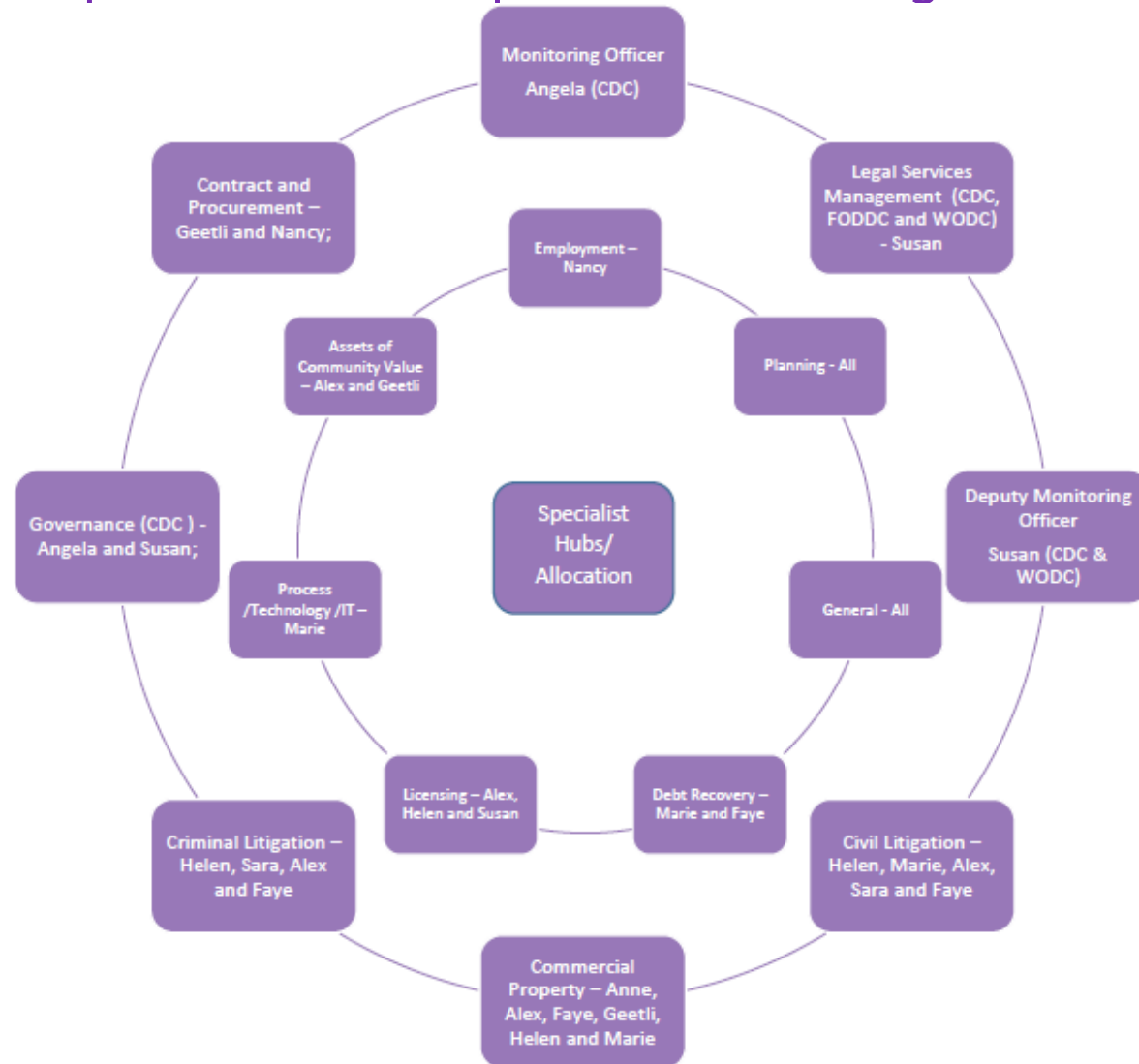


Planning Agreements



Expertise

We have diverse experience and are professional through and through



Helpful

It's at the heart of what we do



Testimonials

What our Clients say

“...extremely helpful and approachable.”

“a dedicated, highly experienced team ...able to respond quickly and provide focused advice and representation.”

“a warm welcome, positive can do attitude and excellent listening skills”

“excellent ...very responsive and willing to help, to tight deadlines”

“they are responsive, easily contactable and constructive in their advice”

“proactive, knowledgeable, engaging and very helpful”

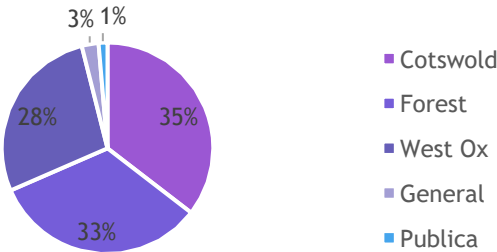
“developed an excellent working relationship, and trust...”

File Opening Analysis 21/22

	CONTRACT	CORPORATE TEAM	DEVELOPMENT MANAGEMENT	ERS	FINANCE	HOUSING & COMMUNITIES	HR	ICT	ESTATES	LEISURE & TOURISM	MISC	PARISH COUNCILS	REVENUES & BENEFITS	COUNTER FRAUD	3rd party instruction	TOTAL/ Council	TOTAL Annual	Percent
Cotswold	26	0	104	3	1	13	0	0	94	3	8	1	5	4	0	262	739	35.45332
Forest	22	0	79	13	1	9	0	0	45	6	27	1	36	5	0	244		33.01759
West Ox	21	0	41	9	3	11	0	0	90	5	18	1	4	1	0	204		27.60487
General	3	1	2	2	0	2	0	0	7	0	0	0	2	0	0	19		2.571042
Publica	6	1	0	1	0	0	2	0	0	0	0	0	0	0	0	10		1.35318
	78	2	226	28	5	35	2	0	236	14	53	3	47	10	0			100

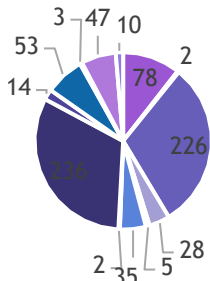
Files Opened by
Dept 21/22

Files Opened by Council 21/22



- Cotswold
- Forest
- West Ox
- General
- Publica

- CONTRACT
- ERS
- HR
- LEISURE & TOURISM
- REVENUES & BENEFITS



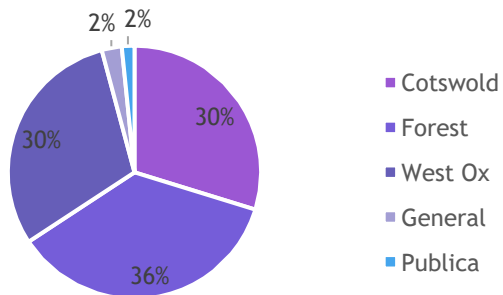
- CORPORATE TEAM
- FINANCE
- ICT
- MISC
- COUNTER FRAUD

- DEVELOPMENT MANAGEMENT
- HOUSING & COMMUNITIES
- ESTATES
- PARISH COUNCILS
- 3rd party instruction

File Opening Analysis 20/21

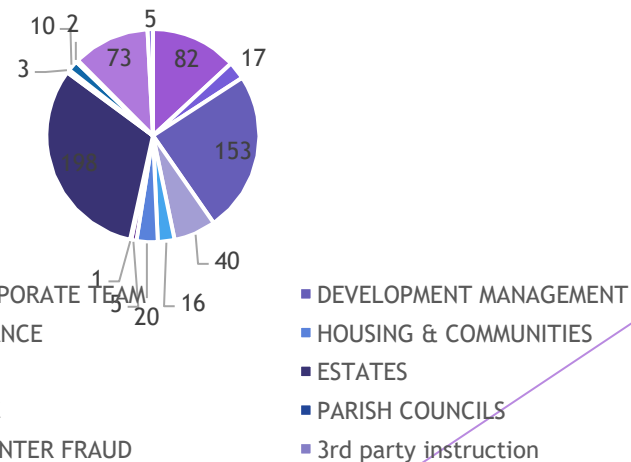
	CONTRACT	CORPORATE TEAM	DEVELOPMENT MANAGEMENT	ERS	FINANCE	HOUSING & COMMUNITIES	HR	ICT	ESTATES	LEISURE & TOURISM	MISC	PARISH COUNCILS	REVENUES & BENEFITS	COUNTER FRAUD	3rd party instruction	TOTAL/ Council	TOTAL Annual	Percent
Cotswold	25	6	59	12	7	8	0	0	57	0	1	1	5	5	0	186	625	29.76
Forest	29	8	45	14	6	1	0	0	51	0	5	0	66	0	0	225		36
West Ox	22	2	48	13	2	9	1	0	84	3	3	1	0	0	0	188		30.08
General	2	0	1	0	1	2	0	1	6	0	1	0	2	0	0	16		2.56
Publica	4	1	0	1	0	0	4	0	0	0	0	0	0	0	0	10		1.6
TOTAL /Dept	82	17	153	40	16	20	5	1	198	3	10	2	73	5	0			

Files Opened by Council
20/21



Files Opened by
Dept 20/21

- CONTRACT
- ERS
- HR
- LEISURE & TOURISM
- REVENUES & BENEFITS



We Look to the Future

Scanning the horizon for challenges, aims and opportunities



We Add Value.

With us by your side you can rise to challenges, seize opportunities and succeed in achieving your corporate priorities.



Conclusion

- ▶ We know you and where you want to go.
- ▶ You know us. You have known us for years.
- ▶ We are good people to work with.
- ▶ With our “can do” attitude we are open for business.

Together we can succeed



Any Questions?